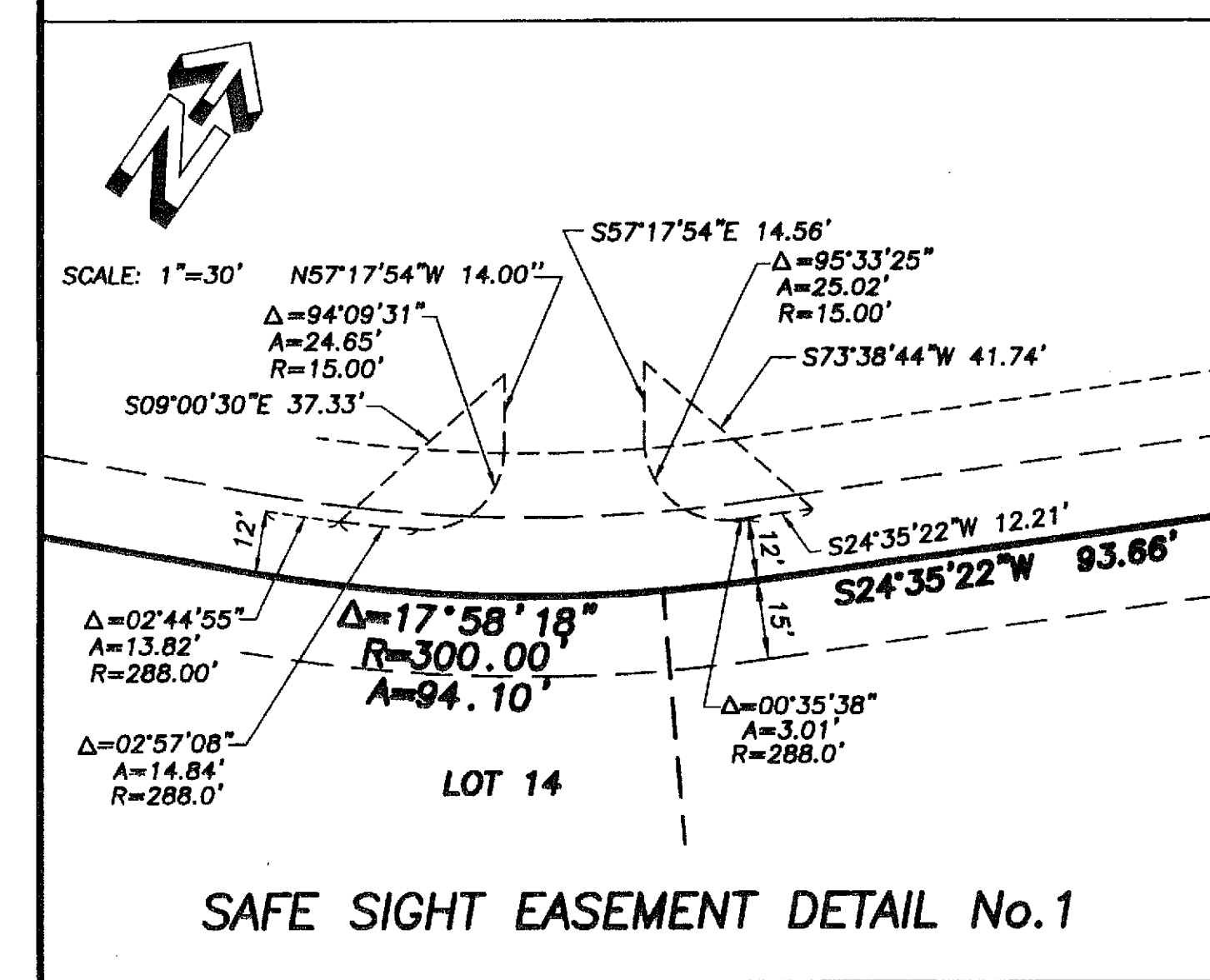
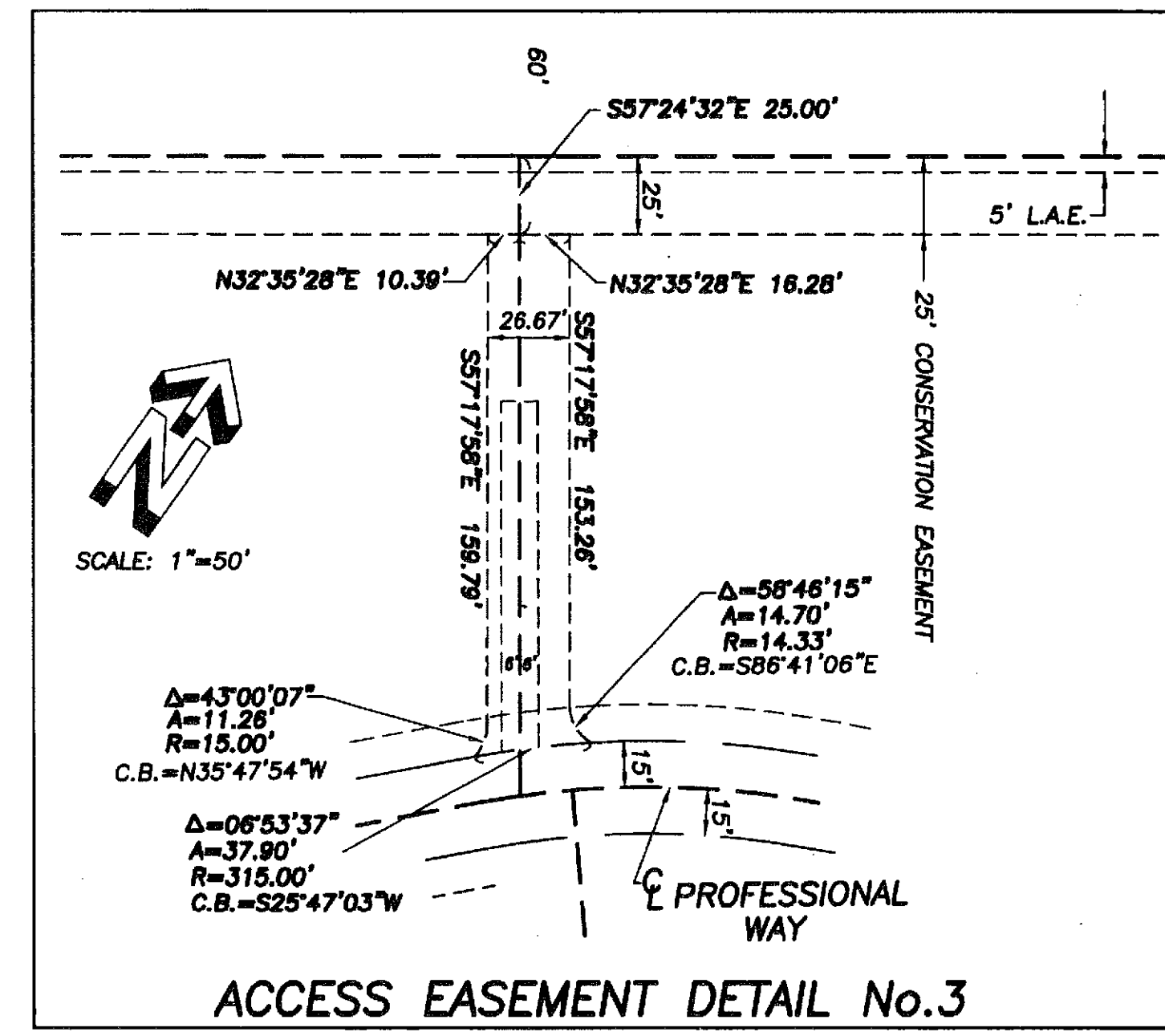
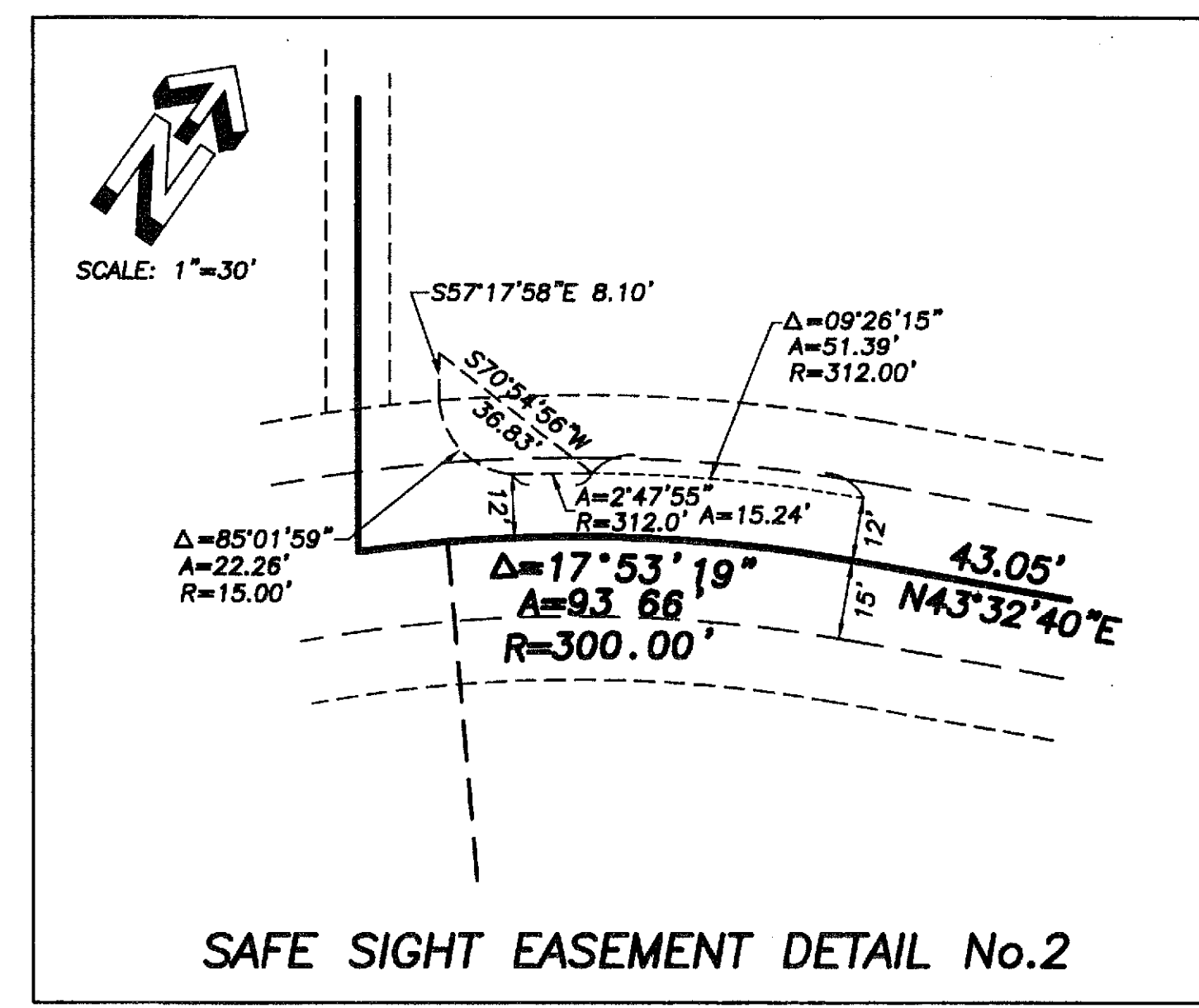
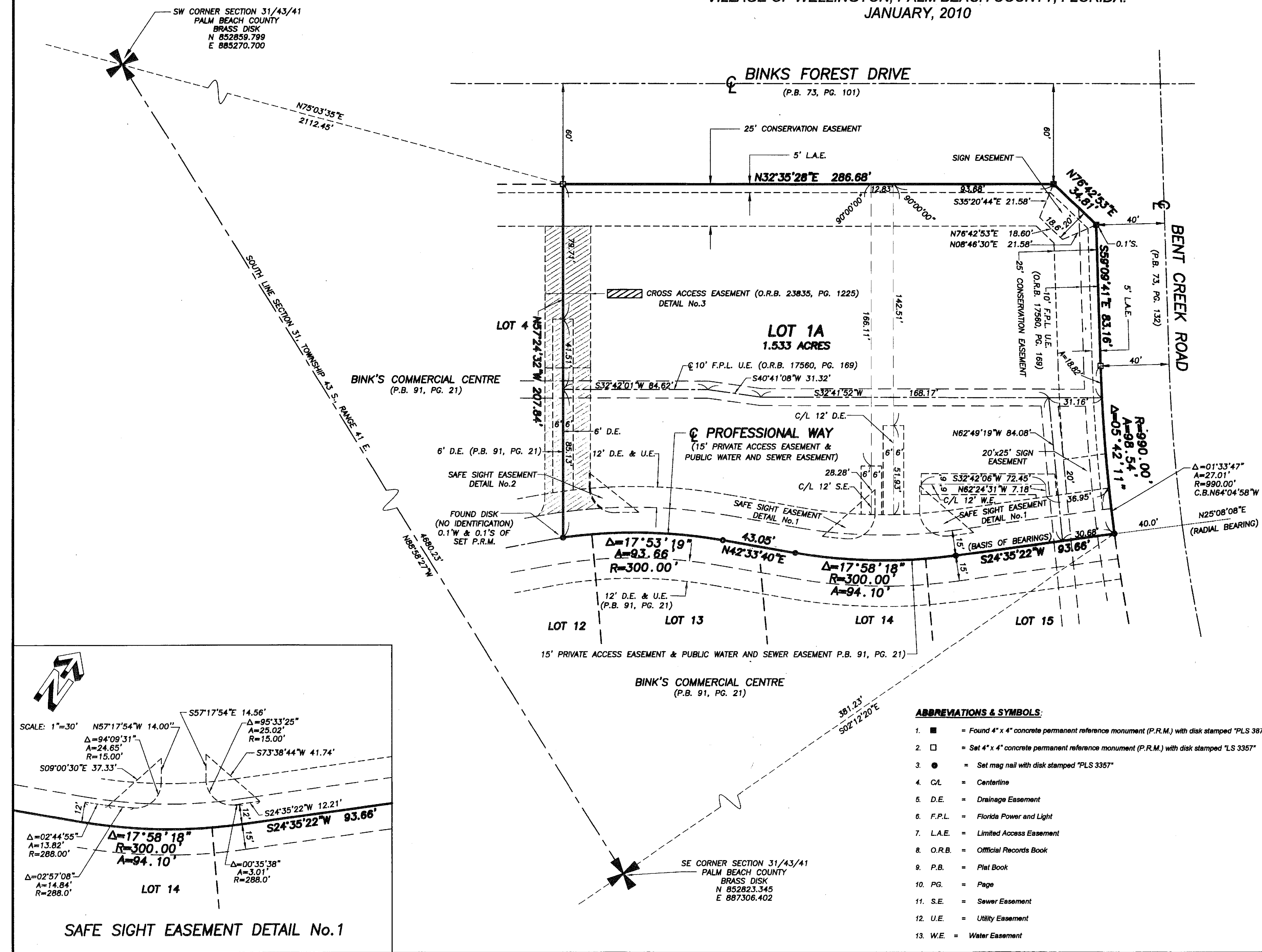
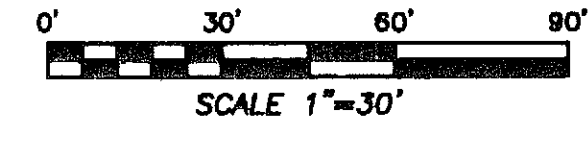


# BINK'S COMMERCIAL CENTRE REPLAT OF LOTS 1, 2 & 3

BEING A REPLAT OF LOTS 1, 2 & 3, BINK'S COMMERCIAL CENTRE, ACCORDING TO THE PLAT THEREOF,  
ON FILE IN THE OFFICE OF THE CLERK OF THE CIRCUIT COURT IN AND FOR PALM BEACH COUNTY,  
FLORIDA, RECORDED IN PLAT BOOK 91, PAGE 21, LYING IN SECTION 31, TOWNSHIP 43 SOUTH, RANGE 41 EAST,  
VILLAGE OF WELLINGTON, PALM BEACH COUNTY, FLORIDA.  
JANUARY, 2010



- ABBREVIATIONS & SYMBOLS:**
- 1. ■ = Found 4" x 4" concrete permanent reference monument (P.R.M.) with disk stamped "PLS 3871"
  - 2. □ = Set 4" x 4" concrete permanent reference monument (P.R.M.) with disk stamped "LS 3357"
  - 3. ● = Set mag nail with disk stamped "PLS 3357"
  - 4. C/L = Centerline
  - 5. D.E. = Drainage Easement
  - 6. F.P.L. = Florida Power and Light
  - 7. L.A.E. = Limited Access Easement
  - 8. O.R.B. = Official Records Book
  - 9. P.B. = Plat Book
  - 10. PG. = Page
  - 11. S.E. = Sewer Easement
  - 12. U.E. = Utility Easement
  - 13. W.E. = Water Easement

**PLAT OF**  
**BINK'S COMMERCIAL CENTRE**  
**REPLAT OF LOTS 1, 2 & 3**

**WALLACE SURVYNG**  
CORP. LICENSED SURVEYOR # 408  
5963 VILLAGE BOULEVARD, WEST PALM BEACH, FLORIDA 33407 (561) 840-4851

FIELD: J.P.	JOB No.: 03-1334.002	F.B. PG.
OFFICE: R.C./M.B.	DATE: JULY, 2009	DWG. No.: 03-1334-2
C/KD: C.W.	REF.: 03-1334-2.DWG	SHEET 3 OF 3